



Newly Renovated Office/Medical Space

67A Mountain Blvd, Warren Twp,
Somerset County, New Jersey

PROPERTY DESCRIPTION

Recently renovated 28,570 SF two story brick/block constructed office building located within the center of Warren. Renovations include new lobby, common area upgrades, bathrooms and exterior improvements including landscaping and new monument sign. Less than 3 miles South of I-78, Exit 36 and 1.8 miles North of SR 22 & Warrentville Rd.

AVAILABLE SPACE

Unit C: 6,809 SF Rentable
Potentially Divisible to:
Unit C1: 2,816 SF Rentable
Unit C2: 3,993 SF Rentable

RENTAL RATES

\$19.50 psf plus tenant Electric

OCCUPANCY

Immediate

PARKING

88 On-site parking spaces

ZONING

BR40 Zone allows a wide range of professional office uses, including medical/dental

FOR ADDITIONAL INFORMATION CONTACT EXCLUSIVE LEASING AGENT

Christian Harrington

Associate- Brokerage Department

908.604.6900 x 119

charrington@silbertrealestate.com

SILBERT
REALTY & MANAGEMENT COMPANY, INC.

152 Liberty Corner Road
Suite 203
Warren, NJ 07059

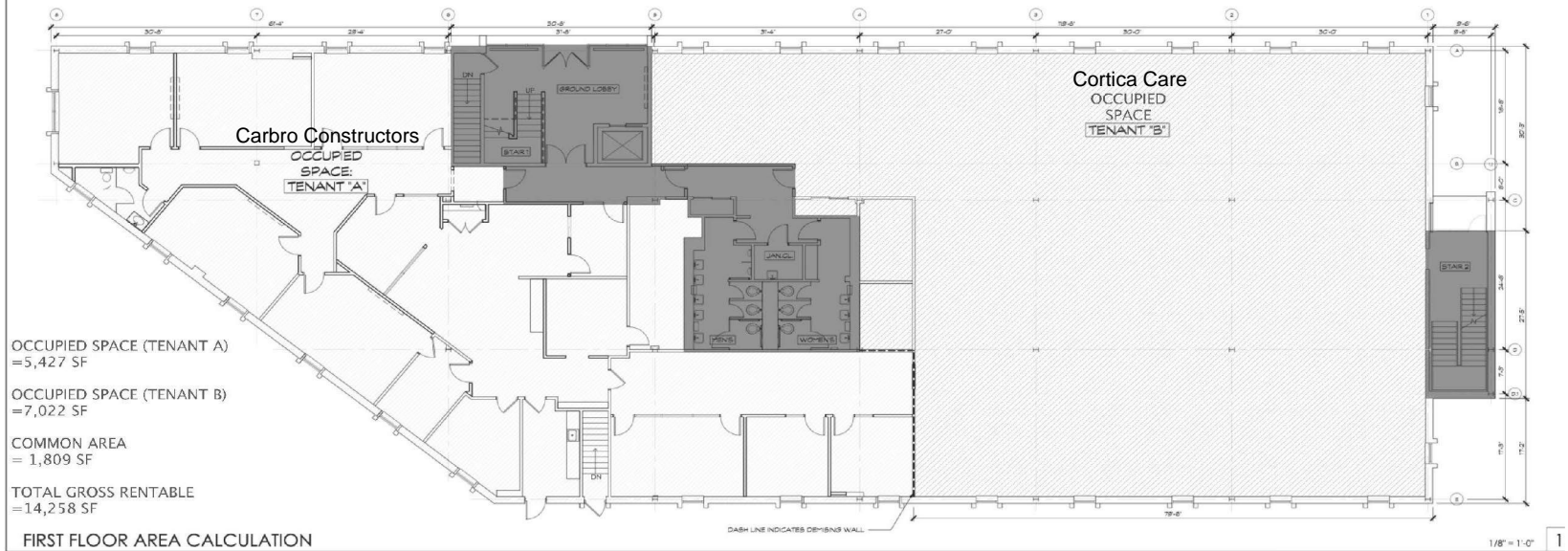
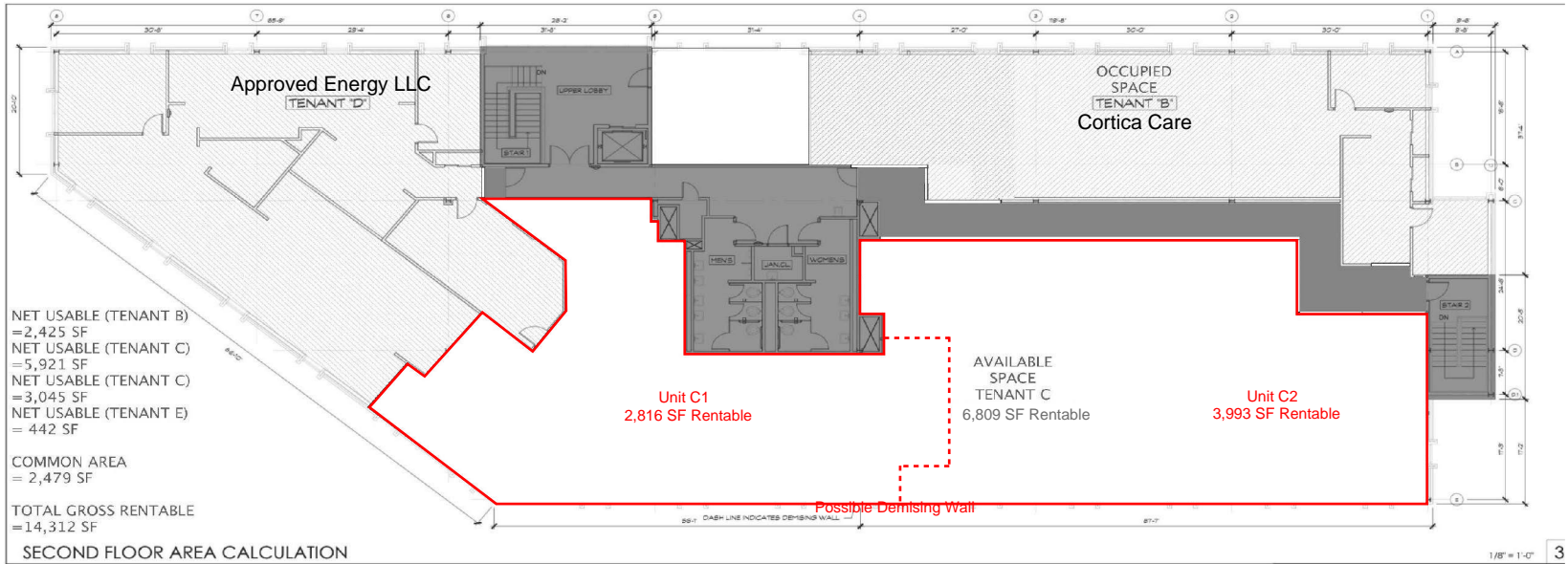


Visit Our Website: WWW.SilbertRealEstate.com

Lobby Photos & Monument Sign



Leasing Plan



Trade Aerial

